

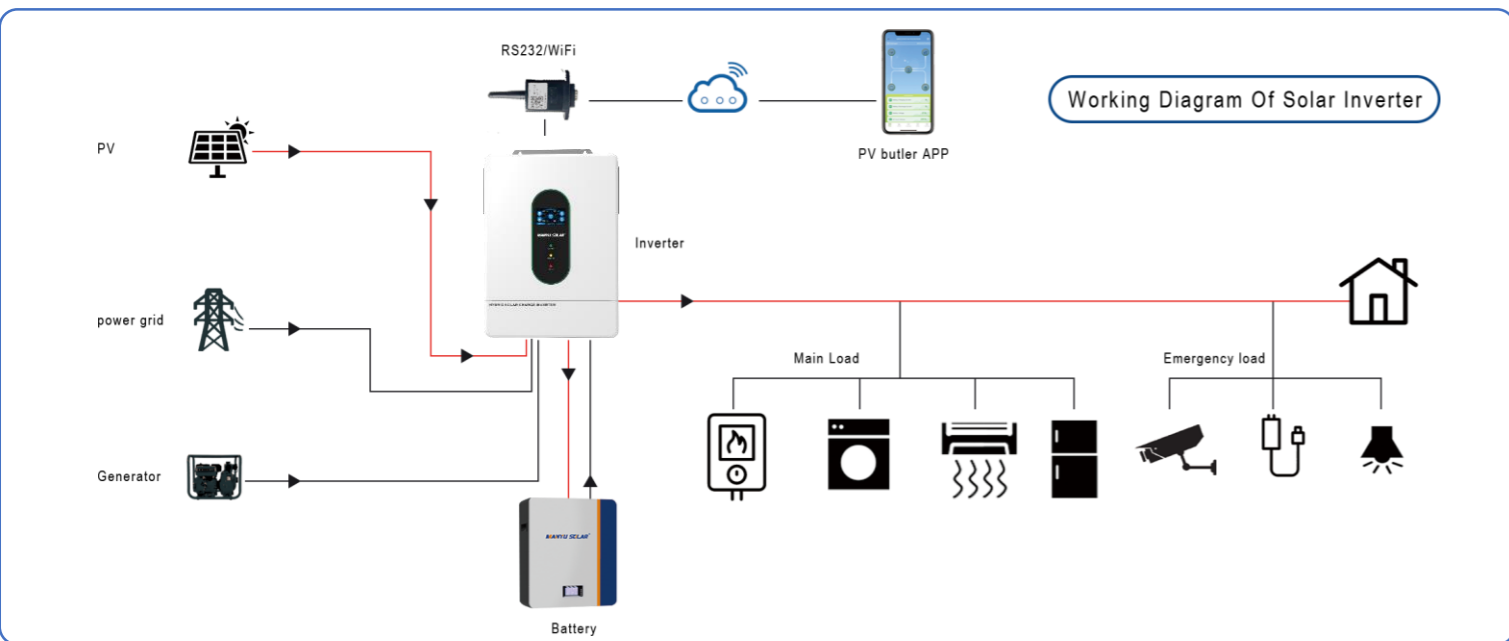
GES4880M180-500

Split-Phase Hybrid Inverter

Home User Storage

Product Features

- 1、 It has the function of sectional charge and discharge (can set the time period for battery charging or discharging).
- 2、 Allowing access of lead-acid battery and lithium battery.
- 3、 Anti feed-in, self-consumption function (can be hybrid power supply from solar, battery and grid).
- 4、 It can be used without battery. Solar and utility grid can power loads at the same time.
- 5、 With dual activation function of lithium battery. It can be triggered by any power supply of the mains or solar (when the li-ion battery was dormant).
- 6、 Power saving mode available to reduce no-load loss.
- 7、 Available in four charging modes: Only Solar, Mains Priority, Solar Priority and Mains & Solar hybrid charging.
- 8、 Two output modes: mains bypass and inverter output; Uninterrupted power supply.
- 9、 Complete protections, including over voltage and under voltage protection, overload protection, reverse protection, etc. 360° all-round protection with a number of protection functions.
- 10、 With touch resistance LCD screen dynamic flow diagram design, easy to understand the system data and operation status.
- 11、 Full digital voltage and current double closed loop control, advanced SPWM technology , output of pure sine wave; support split-phase and single-phase pure sine wave output ; Supports four different voltage levels of 100Vac, 105Vac, 110Vac, and 120Vac per phase.
- 12、 Supports two independent MPPTs, advanced MPPT technology with a tracking efficiency of 99.9%.
- 13、 Intelligent variable speed fan to efficiently dissipate heat and extend system life.
- 14、 Diverse human-computer interaction: support CAN, USB, WiFi and RS485 communication, local and remote power on or off, dry contact control. 15、 Can be extended: external CT or smart meter for whole house energy anti feed-in and self-consumption.



model	GES4880M180-500	GES48100M200-500	GES48120M220-500
Inverter output			
Rated output power	8000W/8000VA	10000W/10000VA	12000W/12000VA
Maximum peak power	12000VA	15000VA	18000VA
Overload protection	(102%< load <110%)±10%: error is reported and the output is turned off after 5 minutes ; (110%< load <125%)+10%: error is reported and the output is turned off after 10 seconds. Load >125%±10%: error is reported and the output is turned off after 5 seconds .		
Rated output voltage	120Vac/240Vac (L1/L2/N/PE split phase)		
Rated output frequency	50Hz/60Hz		
Output waveform	Pure sine wave		
Switching time	10ms typical		
Battery Input			
Battery Type	Lithium iron phosphate battery / ternary lithium battery		
Rated battery voltage	51.2Vdc		
Maximum voltage range	40-60Vdc (depending on the customer's battery voltage range, the maximum cannot exceed this range)		
Maximum AC / generator charging current	100A	120A	160A
Maximum hybrid charging current	180A	200A	220A
Photovoltaic input			
MMPT number of channels	2		
Photovoltaic input power	5500w*2		
Input Current	16A*2		
Open circuit voltage	500V		
Voltage range	100v-450V		
Electricity / Generator Input			
Phase input voltage range	90-140Vac/90-140Vac(L1/L2/N/PE split phase)		
Input frequency range	50/60Hz		
Bypass overload current	63A		
efficiency			
Battery inverter maximum efficiency	>92%		
Basic parameters			
size	650*450*150mm		
Protection level	IP20		
Ambient temperature	-15~55°C, >45°C derating		
noise	<60dB		
Cooling method	Forced air cooling		
Communications			
External interface of the whole machine	RJ45, CT terminal		
External interface	RS485-1/RS485-2/RS485-3/ Dry contact		
Safety	IEC62109-1,IEC62109-2,UL1741		
EMC	EN61000-6-1, EN61000-6-3, FCC 15 class B		
RoHS	have		